

# SUMMER CAMP 2025



## Discover, Learn, and Grow with LMF Summer Camp 2025

The Lizzie Mae Foundation for Humanity (LMF) is excited to present the LMF Summer Camp 2025, from July 6 to August 1, 2025. This 4-week program is designed for children aged 5-14 years, offering an enriching and free summer camp experience. The camp focuses on literacy, leadership, STEM (Science, Technology, Engineering, and Mathematics), and creative arts, ensuring children not only learn but also explore their potential and discover the world around them.

- "It has been a tremendous experience for both the children, and the staff; the community at large as well"

– Ms. Sofiya, Principal,  
Brownsville Primary School



## Program Details and Features

The camp is structured to cater to children of varying age groups, divided into Lower Camp (ages 5-6), Inter Camp (ages 7-10), and Upper Camp (ages 11-14). Each day is filled with a diverse range of activities including arts, science, leadership, and community-building exercises. Our carefully crafted curriculum ensures each child is engaged in activities that inspire curiosity, collaboration, and creativity.

*Read More on our website*



### LMF Summer Camp



### About the Camp

The LMF Summer Camp 2025 is committed to creating a nurturing and supportive environment where children can learn, grow, and discover their potential. We emphasize inclusivity and empowerment for every camper. Each day, children are engaged in structured programs that balance education, creativity, and leadership skills.



### ● Key Features of the Camp

- We ensure that every camper receives a healthy meal and the necessary supplies to support their learning and development.
- LMF extends its impact beyond the camp by providing donations of clothing and hygiene products for families.
- Our programs encourage children to explore their unique talents and build meaningful connections with their peers.

## Overview

A transformative experience for children and families, the LMF Summer Camp is a free 4-week program for children aged 5-14 years, designed to empower young minds and nurture personal growth. Our camp offers a balanced mix of literacy, leadership, STEM (Science, Technology, Engineering, and Mathematics), and creative arts, all within a supportive environment that fosters both education and creativity.



## Classes

## Program Details

- Dates: July 6 - August 1, 2025
- Location: To be announced
- Age Group: 5-14 years
- Cost: Free for all campers

## Special Programs

- Sports Groups
- Tablet Program



**Read More**

[www.lizziemaefoundation.com](http://www.lizziemaefoundation.com)

# VOLUNTEER CONTRIBUTIONS

## International Volunteers

International Volunteers bring global perspectives, enriching the camp with their expertise in education, arts, and leadership. Their diverse backgrounds expose campers to new cultures and ways of thinking.



## Local Volunteers

Local Volunteers provide essential knowledge of the community, ensuring the camp's activities are aligned with local traditions and needs. They serve as mentors, manage logistics, and ensure the camp runs smoothly.



## Junior Student Leaders

Junior Student Leaders are high school or university students who mentor younger campers, assisting with activities and helping foster a supportive and collaborative environment. They gain valuable leadership and teamwork skills while guiding the children.



# INTERNATIONAL VOLUNTEERS

[WWW.LIZZIEMAEFOUNDATION.COM](http://WWW.LIZZIEMAEFOUNDATION.COM)



## Importance

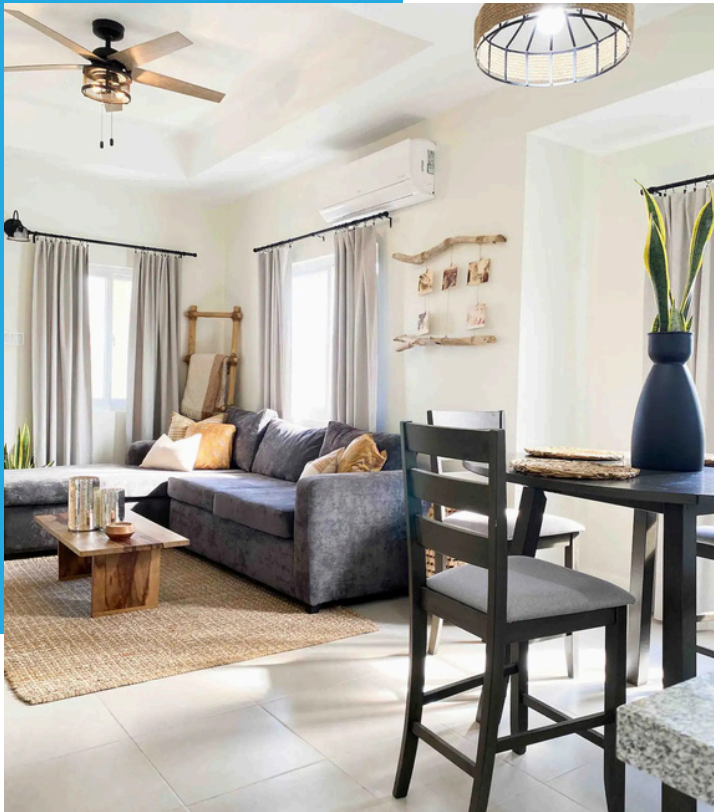
International Volunteers are essential to LMF Summer Camp 2025, bringing global knowledge, expertise, and diverse perspectives that create an enriching experience for campers. Their contributions expose children to new cultures and ideas, helping them develop a broader worldview.

## Key Contributions

- **Educational Expertise:** Professionals from various fields enrich the camp curriculum, fostering critical thinking and creativity.
- **Cultural Exchange:** Volunteers introduce campers to new languages and traditions, broadening their understanding of global diversity.
- **Leadership and Mentorship:** Serving as role models, they guide campers in leadership and team-building activities.
- **Program Development:** Volunteers collaborate with local staff to design culturally relevant activities that are impactful for the children.
- **Networking:** International volunteers connect globally, sharing best practices and benefiting from cross-cultural collaboration.



## New Relationships Made



## Registration Process

- Online Application: Complete the form on our website.
- Acceptance: Notified within 7 days.
- Deposit Payment: Secure your spot with the deposit after being accepted into the program.
- Orientation: Receive welcome packet and camp details after full payment.

**For more information visit our website**

## Cancellation Policy

- Non-Refundable Deposit: A deposit of \$200 USD is required upon acceptance to secure your spot. This deposit is non-refundable.
- Refund Policy: A partial refund of up to 50% will be issued if a candidate cancels their application at least 60 days before the camp.
- Complete Payment: Full payment is required no later than 60 days before the start of the program.
- No Refund: Cancellations made within 60 days of the camp start date will not be eligible for a refund.



The fee for International Volunteers is \$2,500, covering:

- Accommodation: Comfortable lodging for the 4-week program.
- Local Transport: Transportation to and from camp activities.
- Orientation: Pre-camp orientation and materials.

— Thank You! —



**We extend our heartfelt thanks to everyone who supports the LMF Summer Camp 2025. Your passion, commitment, and generosity allow us to continue making a meaningful difference in the lives of children and their families. Together, we are building a community of empowered individuals and creating lasting change. Thank you for being part of our mission!**

**[Click Here to Join as an International Volunteer](#)**

